

THE POINT.



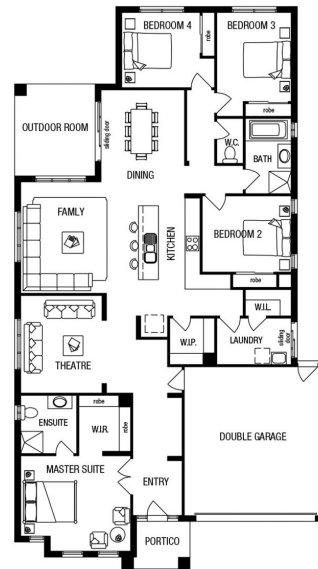
Langdon 26 Metricon Homes \$760,967



LOT: 1002
AREA: 508m²
FRONTAGE: 13m

Inclusions

Luxury Inclusions
Lifetime structural guarantee#
Fixed site costs
Large 900mm wide stainless steel appliances
2550mm high ceilings
Concrete driveway and path (up to 35m²)
Fibre optic package
Tiled shower base to bathroom and ensuite
Floor Coverings throughout
Stone Benchtops to kitchen, ensuite and bathroom
Personalised colour selection with an interior designer



thepointpointlonsdale.com.au
Phone 0427 257 712

Contact our Estate Manager
Nick Grace 0427 257 712

DEVELOPED BY



PACKAGE PRICE MAY VARY DUE TO ACTUAL LAND AVAILABILITY. BUILDERS RESERVE THE RIGHT TO CHANGE PRICES WITHOUT NOTICE TO THE DEVELOPER. THE DEVELOPER IS ONLY PROVIDING THE LAND COMPONENT OF THE HOUSE AND LAND PACKAGE. FIXED PRICE PACKAGES ARE SUBJECT TO THE DEVELOPER'S DESIGN REVIEW PANEL'S FINAL APPROVAL. EVERY PRECAUTION HAS BEEN TAKEN TO ESTABLISH THE ACCURACY OF THE MATERIAL HEREIN HOWEVER, PROSPECTIVE BUYERS SHOULD MAKE THEIR OWN ENQUIRIES OF THE BUILDERS DIRECTLY TO SATISFY THEMSELVES ON ALL ASPECTS OF THE HOUSE AND ITS SUITABILITY FOR THE LAND SELECTED. ALL ARTWORK IS ARTIST IMPRESSIONS ONLY AND FINAL PRODUCT MAY DIFFER. THE ADVERTISING PRICING IS ACCURATE AS AT THE TIME OF PRINTING.