

# THE POINT.



HAMLAN

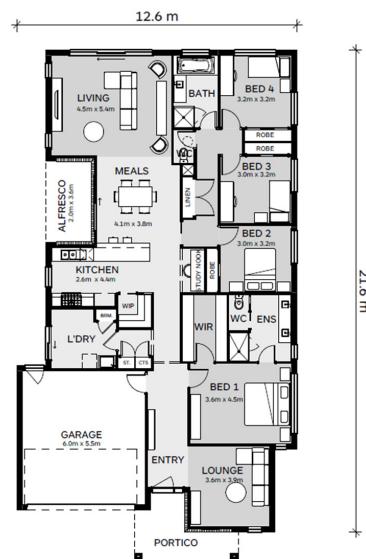
## Buckley 250 Stellar Hamlan Homes \$891,003



LOT: 1105  
AREA: 621m<sup>2</sup>  
FRONTAGE: 19.42m

### Inclusions

- Quality tiles & carpet throughout
- Tesla Solar Power
- Colorbond Steel Roof
- Site Cost Allowance
- Developer Requirements
- 2550mm Ceiling Height
- Bank of 2 Pot Drawers
- Insitu Tiled Showerbase
- SMEG 900mm Underbench Oven & Cooktop
- Stone benchtops to kitchen



thepointpointlonsdale.com.au  
Phone 0427 257 712

Contact our Estate Manager  
Nick Grace 0427 257 712

DEVELOPED BY



PACKAGE PRICE MAY VARY DUE TO ACTUAL LAND AVAILABILITY. BUILDERS RESERVE THE RIGHT TO CHANGE PRICES WITHOUT NOTICE TO THE DEVELOPER. THE DEVELOPER IS ONLY PROVIDING THE LAND COMPONENT OF THE HOUSE AND LAND PACKAGE. FIXED PRICE PACKAGES ARE SUBJECT TO THE DEVELOPER'S DESIGN REVIEW PANEL'S FINAL APPROVAL. EVERY PRECAUTION HAS BEEN TAKEN TO ESTABLISH THE ACCURACY OF THE MATERIAL HEREIN HOWEVER, PROSPECTIVE BUYERS SHOULD MAKE THEIR OWN ENQUIRIES OF THE BUILDERS DIRECTLY TO SATISFY THEMSELVES ON ALL ASPECTS OF THE HOUSE AND ITS SUITABILITY FOR THE LAND SELECTED. ALL ARTWORK IS ARTIST IMPRESSIONS ONLY AND FINAL PRODUCT MAY DIFFER. THE ADVERTISING PRICING IS ACCURATE AS AT THE TIME OF PRINTING.