

THE POINT.



HAMLAN

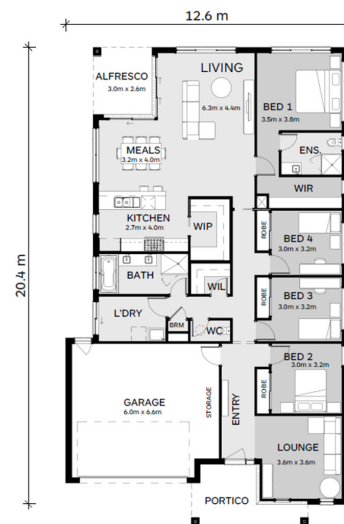
Carisbrook 240 Stellar Hamlan Homes \$848,703



LOT: 932
AREA: 448m²
FRONTAGE: 14m

Inclusions

- Quality tiles & carpet throughout
- Tesla Solar Power
- Colorbond Steel Roof
- Site Cost Allowance
- Developer Requirements
- 2550mm Ceiling Height
- Bank of 2 Pot Drawers
- Insitu Tiled Showerbase
- SMEG 900mm Underbench Oven & Cooktop
- Stone benchtops to kitchen



thepointpointlonsdale.com.au
Phone 0427 257 712

Contact our Estate Manager
Nick Grace 0427 257 712

DEVELOPED BY



PACKAGE PRICE MAY VARY DUE TO ACTUAL LAND AVAILABILITY. BUILDERS RESERVE THE RIGHT TO CHANGE PRICES WITHOUT NOTICE TO THE DEVELOPER. THE DEVELOPER IS ONLY PROVIDING THE LAND COMPONENT OF THE HOUSE AND LAND PACKAGE. FIXED PRICE PACKAGES ARE SUBJECT TO THE DEVELOPER'S DESIGN REVIEW PANEL'S FINAL APPROVAL. EVERY PRECAUTION HAS BEEN TAKEN TO ESTABLISH THE ACCURACY OF THE MATERIAL HEREIN HOWEVER, PROSPECTIVE BUYERS SHOULD MAKE THEIR OWN ENQUIRIES OF THE BUILDERS DIRECTLY TO SATISFY THEMSELVES ON ALL ASPECTS OF THE HOUSE AND ITS SUITABILITY FOR THE LAND SELECTED. ALL ARTWORK IS ARTIST IMPRESSIONS ONLY AND FINAL PRODUCT MAY DIFFER. THE ADVERTISING PRICING IS ACCURATE AS AT THE TIME OF PRINTING.