

# THE POINT.



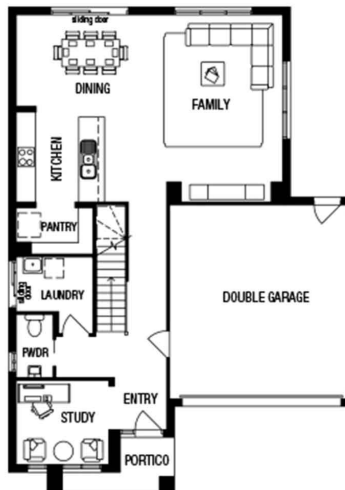
## Zita 25 Metricon Homes \$691,770



LOT: 1208  
AREA: 448m<sup>2</sup>  
FRONTAGE: 16m

### Inclusions

- 25 years structural guarantee#
- 20mm stone benchtop to Kitchen
- Large 900mm wide stainless steel appliances
- 2550mm high ceilings to ground floor, 2440mm to first floor
- Gas ducted heating
- Remote control garage door
- Feature front render (up to 30m<sup>2</sup>)
- Fibre optic package
- 25 year structural guarantee#
- Rainwater Tank



[thepointpointlonsdale.com.au](http://thepointpointlonsdale.com.au)  
Phone 0427 257 712

Contact our Estate Manager  
Nick Grace 0427 257 712

DEVELOPED BY



PACKAGE PRICE MAY VARY DUE TO ACTUAL LAND AVAILABILITY. BUILDERS RESERVE THE RIGHT TO CHANGE PRICES WITHOUT NOTICE TO THE DEVELOPER. THE DEVELOPER IS ONLY PROVIDING THE LAND COMPONENT OF THE HOUSE AND LAND PACKAGE. FIXED PRICE PACKAGES ARE SUBJECT TO THE DEVELOPER'S DESIGN REVIEW PANEL'S FINAL APPROVAL. EVERY PRECAUTION HAS BEEN TAKEN TO ESTABLISH THE ACCURACY OF THE MATERIAL HEREIN HOWEVER, PROSPECTIVE BUYERS SHOULD MAKE THEIR OWN ENQUIRIES OF THE BUILDERS DIRECTLY TO SATISFY THEMSELVES ON ALL ASPECTS OF THE HOUSE AND ITS SUITABILITY FOR THE LAND SELECTED. ALL ARTWORK IS ARTIST IMPRESSIONS ONLY AND FINAL PRODUCT MAY DIFFER. THE ADVERTISING PRICING IS ACCURATE AS AT THE TIME OF PRINTING.