

THE POINT.



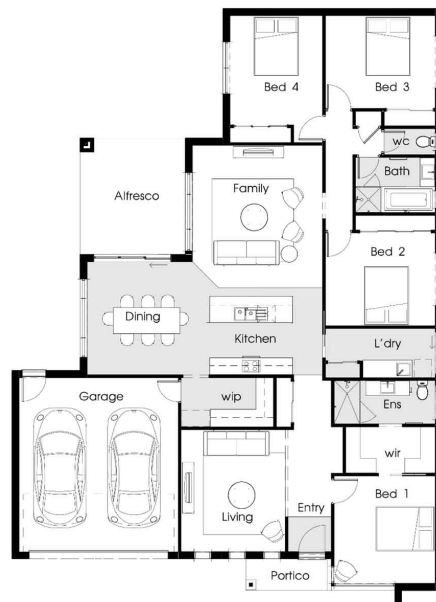
E16-183 Cumberland Linked Building \$842,348



LOT: 1228
AREA: 512m²
FRONTAGE: 16m

Inclusions

- LED downlights
- Dulux 3 coat paint system
- Westinghouse appliances including dishwasher
- Stone top benches to Kitchen and Bathrooms
- Roller blinds
- Double glazed windows and sliding doors
- Flyscreens to windows and sliding doors
- Gas ducted heating
- Remote control garage door
- Exposed aggregate drive way, entry porch and alfresco
- Council and developer guidelines



thepointpointlonsdale.com.au
Phone 0427 257 712

Contact our Estate Manager
Nick Grace 0427 257 712

DEVELOPED BY



PACKAGE PRICE MAY VARY DUE TO ACTUAL LAND AVAILABILITY. BUILDERS RESERVE THE RIGHT TO CHANGE PRICES WITHOUT NOTICE TO THE DEVELOPER. THE DEVELOPER IS ONLY PROVIDING THE LAND COMPONENT OF THE HOUSE AND LAND PACKAGE. FIXED PRICE PACKAGES ARE SUBJECT TO THE DEVELOPER'S DESIGN REVIEW PANEL'S FINAL APPROVAL. EVERY PRECAUTION HAS BEEN TAKEN TO ESTABLISH THE ACCURACY OF THE MATERIAL HEREIN HOWEVER, PROSPECTIVE BUYERS SHOULD MAKE THEIR OWN ENQUIRIES OF THE BUILDERS DIRECTLY TO SATISFY THEMSELVES ON ALL ASPECTS OF THE HOUSE AND ITS SUITABILITY FOR THE LAND SELECTED. ALL ARTWORK IS ARTIST IMPRESSIONS ONLY AND FINAL PRODUCT MAY DIFFER. THE ADVERTISING PRICING IS ACCURATE AS AT THE TIME OF PRINTING.