

# THE POINT.



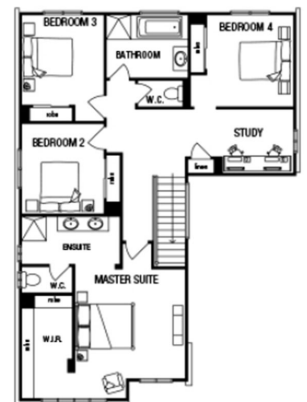
## Winchester 34 Metricon Homes \$865,904



LOT: 1109  
AREA: 576m<sup>2</sup>  
FRONTAGE: 18m

### Inclusions

- Lifetime structural guarantee#
- 20mm stone benchtop to Kitchen
- Large 900mm wide stainless steel appliances
- 2550mm high ceilings to ground floor, 2440mm to first floor
- Concrete driveway and path (up to 35m<sup>2</sup>)
- Fibre optic package
- Rainwater Tank
- Tiled shower base to bathroom and ensuite
- Floor Coverings throughout



thepointpointlonsdale.com.au  
Phone 0460 016 789

Contact our Estate Manager  
Leonie Sexton 0460 016 789

DEVELOPED BY



PACKAGE PRICE MAY VARY DUE TO ACTUAL LAND AVAILABILITY. BUILDERS RESERVE THE RIGHT TO CHANGE PRICES WITHOUT NOTICE TO THE DEVELOPER. THE DEVELOPER IS ONLY PROVIDING THE LAND COMPONENT OF THE HOUSE AND LAND PACKAGE. FIXED PRICE PACKAGES ARE SUBJECT TO THE DEVELOPER'S DESIGN REVIEW PANEL'S FINAL APPROVAL. EVERY PRECAUTION HAS BEEN TAKEN TO ESTABLISH THE ACCURACY OF THE MATERIAL HEREIN HOWEVER, PROSPECTIVE BUYERS SHOULD MAKE THEIR OWN ENQUIRIES OF THE BUILDERS DIRECTLY TO SATISFY THEMSELVES ON ALL ASPECTS OF THE HOUSE AND ITS SUITABILITY FOR THE LAND SELECTED. ALL ARTWORK IS ARTIST IMPRESSIONS ONLY AND FINAL PRODUCT MAY DIFFER. THE ADVERTISING PRICING IS ACCURATE AS AT THE TIME OF PRINTING.