

THE POINT.



LEVONIX
HOMES

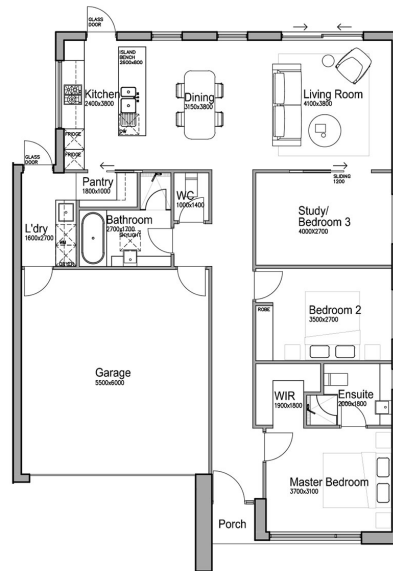
Winki Levonix Homes \$686,910



LOT: 1401
AREA: 420m²
FRONTAGE: 14m

Inclusions

Price includes standard facade.
Fixed site costs up to class P soil.
Developer & council requirements.
6 Month Maintenance Period.
One on one colour appointment.
2590mm Ceiling Height.
900mm appliances.
Recessed tiled shower bases.
Roller blinds throughout.
LED lighting throughout.
Exposed Agg driveway.



thepointpointlonsdale.com.au
Phone 0427 257 712

Contact our Estate Manager
Leonie Sexton 0427 257 712

DEVELOPED BY



PACKAGE PRICE MAY VARY DUE TO ACTUAL LAND AVAILABILITY. BUILDERS RESERVE THE RIGHT TO CHANGE PRICES WITHOUT NOTICE TO THE DEVELOPER. THE DEVELOPER IS ONLY PROVIDING THE LAND COMPONENT OF THE HOUSE AND LAND PACKAGE. FIXED PRICE PACKAGES ARE SUBJECT TO THE DEVELOPER'S DESIGN REVIEW PANEL'S FINAL APPROVAL. EVERY PRECAUTION HAS BEEN TAKEN TO ESTABLISH THE ACCURACY OF THE MATERIAL HEREIN HOWEVER, PROSPECTIVE BUYERS SHOULD MAKE THEIR OWN ENQUIRIES OF THE BUILDERS DIRECTLY TO SATISFY THEMSELVES ON ALL ASPECTS OF THE HOUSE AND ITS SUITABILITY FOR THE LAND SELECTED. ALL ARTWORK IS ARTIST IMPRESSIONS ONLY AND FINAL PRODUCT MAY DIFFER. THE ADVERTISING PRICING IS ACCURATE AS AT THE TIME OF PRINTING.