

# THE POINT.



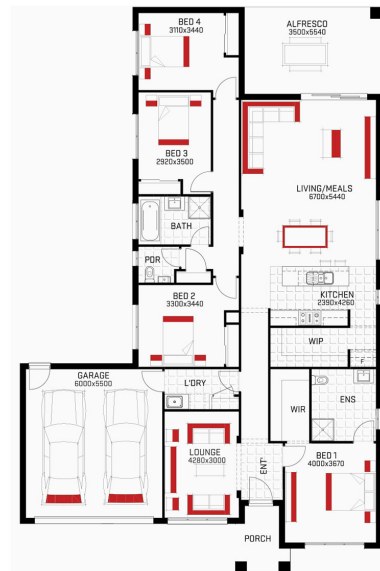
## Woodside 1627A Harmac Homes \$761,280



LOT: 1108  
AREA: 576m<sup>2</sup>  
FRONTAGE: 18m

### Inclusions

- Fixed site costs
- Floor coverings throughout
- 2590mm high ceilings
- 20mm stone to kitchen
- 900mm European appliances
- Tiled shower bases
- Vinyl sliding robes to bedrooms
- Coloured concrete driveway
- 25 year structural warranty



[thepointpointlonsdale.com.au](http://thepointpointlonsdale.com.au)  
Phone 0460 016 789

Contact our Estate Manager  
Leonie Sexton 0460 016 789

DEVELOPED BY



PACKAGE PRICE MAY VARY DUE TO ACTUAL LAND AVAILABILITY. BUILDERS RESERVE THE RIGHT TO CHANGE PRICES WITHOUT NOTICE TO THE DEVELOPER. THE DEVELOPER IS ONLY PROVIDING THE LAND COMPONENT OF THE HOUSE AND LAND PACKAGE. FIXED PRICE PACKAGES ARE SUBJECT TO THE DEVELOPER'S DESIGN REVIEW PANEL'S FINAL APPROVAL. EVERY PRECAUTION HAS BEEN TAKEN TO ESTABLISH THE ACCURACY OF THE MATERIAL HEREIN HOWEVER, PROSPECTIVE BUYERS SHOULD MAKE THEIR OWN ENQUIRIES OF THE BUILDERS DIRECTLY TO SATISFY THEMSELVES ON ALL ASPECTS OF THE HOUSE AND ITS SUITABILITY FOR THE LAND SELECTED. ALL ARTWORK IS ARTIST IMPRESSIONS ONLY AND FINAL PRODUCT MAY DIFFER. THE ADVERTISING PRICING IS ACCURATE AS AT THE TIME OF PRINTING.