

THE POINT.



G.J. Gardner **HOMES**

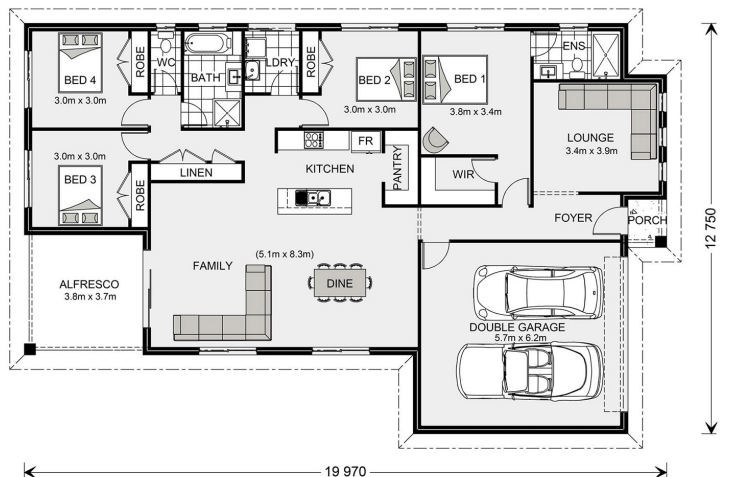
Woodridge 216 G.J. Gardner \$681,000



LOT: 1212
AREA: 448m²
FRONTAGE: 14m

Inclusions

Beach Facade
Carpet & Tiles throughout
Double Glazed Windows & Sliding Doors with Fly Screens
900mm Westinghouse Appliances
Caeserstone Kitchen Bench Tops
2550mm High Ceilings (8 foot 6)



thepointpointlonsdale.com.au
Phone 0427 257 712

Contact our Estate Manager
Leonie Sexton 0427 257 712

DEVELOPED BY



PACKAGE PRICE MAY VARY DUE TO ACTUAL LAND AVAILABILITY. BUILDERS RESERVE THE RIGHT TO CHANGE PRICES WITHOUT NOTICE TO THE DEVELOPER. THE DEVELOPER IS ONLY PROVIDING THE LAND COMPONENT OF THE HOUSE AND LAND PACKAGE. FIXED PRICE PACKAGES ARE SUBJECT TO THE DEVELOPER'S DESIGN REVIEW PANEL'S FINAL APPROVAL. EVERY PRECAUTION HAS BEEN TAKEN TO ESTABLISH THE ACCURACY OF THE MATERIAL HEREIN HOWEVER, PROSPECTIVE BUYERS SHOULD MAKE THEIR OWN ENQUIRIES OF THE BUILDERS DIRECTLY TO SATISFY THEMSELVES ON ALL ASPECTS OF THE HOUSE AND ITS SUITABILITY FOR THE LAND SELECTED. ALL ARTWORK IS ARTIST IMPRESSIONS ONLY AND FINAL PRODUCT MAY DIFFER. THE ADVERTISING PRICING IS ACCURATE AS AT THE TIME OF PRINTING.